



9 4 J A C K S O N R O A D , S U I T E 1 1 0 , D E V E N S , M A 0 1 4 3 4

TERMINATIONS

Model RMTE.18000nf2

Type N female

FREQUENCY (MHz)	POWER (Watt)(nominal)	POWER PEAK	IMPEDANCE (Ω)	VSWR (max)
DC – 18000	2	1Kw/50us	50	1.20:1

Notes:

a. Case Materials/Plating:

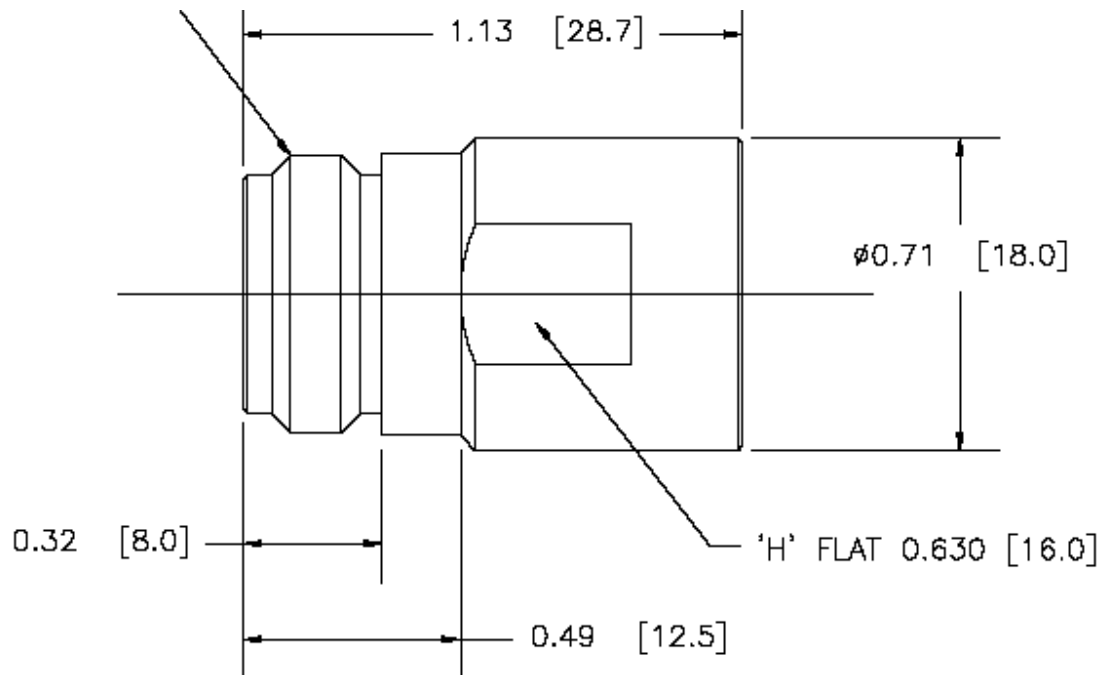
Housing: Stainless Steel/passivate

Center Contact: Gold plated brass per MIL-G-45204

Resistive element: Thin film

Resistor substrate: Alumina

b. Operation temperature: -55C to +125C



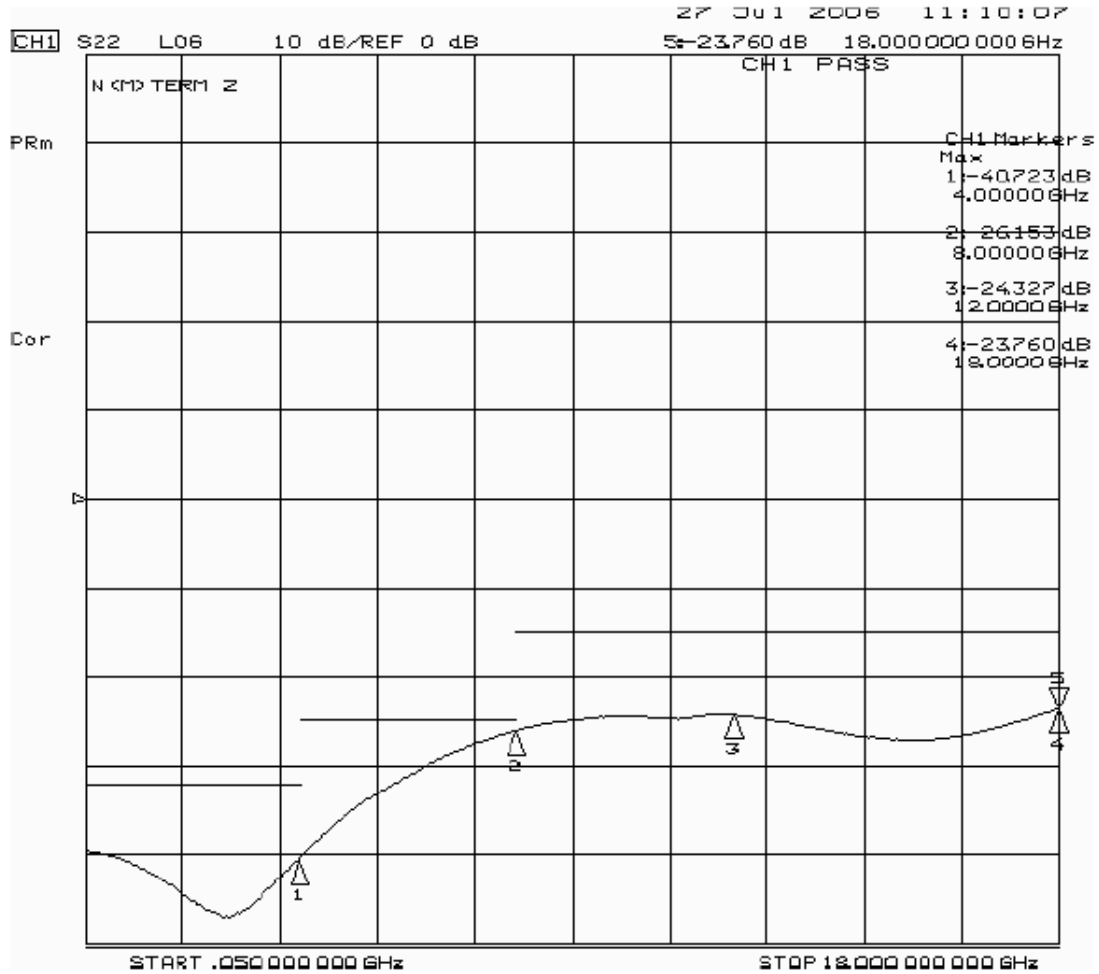
Telephone: 978-772-3767
772-3768

Fax: 978-

www.responsemicrowave.com



9 4 J A C K S O N R O A D , S U I T E 1 1 0 , D E V E N S , M A 0 1 4 3 4



All specifications are subject to change without notice.

Telephone: 978-772-3767
772-3768

Fax: 978-

www.responsemicrowave.com