



9 4 J A C K S O N R O A D , S U I T E 1 1 0 , D E V E N S , M A 0 1 4 3 4

TERMINATIONS

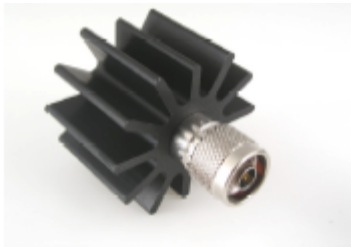
Model RMTE.3000Nm10

N male, Screw-on

FREQUENCY (MHz)	POWER (WATT)(avg)	IMPEDANCE (Ω)	VSWR (max)	WEIGHT (grams)
DC-3000	10	50	1.15:1	350

Notes:

- a. Case Materials/Plating:
 - Housing: Brass w/silver or ternary alloy
 - Flange: Aluminum w/black chromate
 - Insulator: PTFE
- b. Operation temperature: -40C to +85C deg



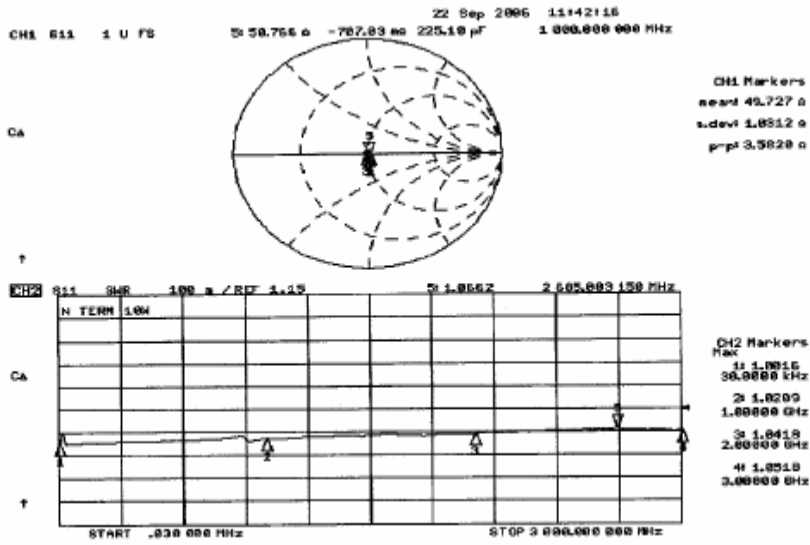
Telephone: 978-772-3767
772-3768

Fax: 978-

www.responsemicrowave.com



9 4 J A C K S O N R O A D , S U I T E 1 1 0 , D E V E N S , M A 0 1 4 3 4



All specifications are subject to change without notice.

Telephone: 978-772-3767
 772-3768

Fax: 978-

www.responsemicrowave.com